

ORDER SPECIFICATION CODE

Based on the code system here you should be able to specify the handle type, material and finish, and the type of fixing nut you would like suiting to door thickness. **Please specify in a similar way to the following example:**

Double-sided door handle (pair)

Sample code specification:

K4-600/25BM5
| CODE | FINISH METAL | 3 CODE | DOOR THICKNESS

Single-sided door handle (piece)

Sample code specification:

K4-600/25BM5#
| CODE | FINISH METAL | 3 CODE | DOOR THICKNESS | 1 SIDE OPTION

Single-sided handles (pieces)

= Fixing guide, not through door
Fixing guide, through door

METAL & FINISH

Please specify metal or wood finish.

B Brushed Stainless Steel

P Polished Stainless Steel

RAL Powder coating (ESD)

C Polished Brass CuZn

Wood Natural

Wood Brown

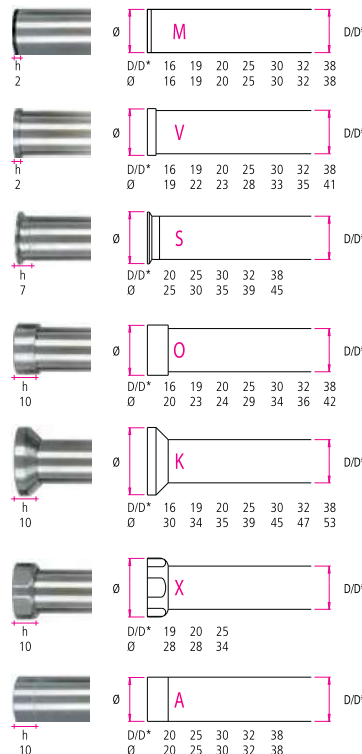
Wood Black

FIXING

Handles are available with a variety of round or hexagonal fixing nuts.

Please specify M, V, S, O, K, X, A fixing, based on the table of fixing nuts shown here.

If **M, V** fixing, **please specify for Right Hand RH or Left Hand LH** opening doors.

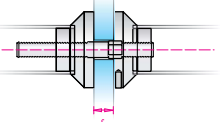


Depending on the choice of fixing nut, the h-height of the fixing nut is added to the H-height of the handle.

DOOR THICKNESS s min. 5 mm

Please specify length of fixing bolt using the **s** CODE based on the thickness of the door. Handles are suitable for doors or all materials.

DOOR THICKNESS	s CODE
5 – 25 mm	1
25 – 40 mm	2
40 – 55 mm	3
55 – 70 mm	4
70 – 85 mm	5
85 – 100 mm	6



FLANGE FIXING

Flange F, FD

Double-sided door handle (pair) Sample code specification:

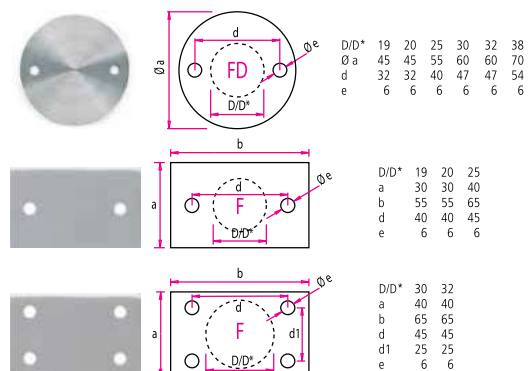
K4-600/25BFDN
| CODE | FINISH METAL | 3 CODE | DOOR THICKNESS

Single-sided door handle (piece) Sample code specification:

K4-600/25BFDN#
| CODE | FINISH METAL | 3 CODE | DOOR THICKNESS | 1 SIDE OPTION

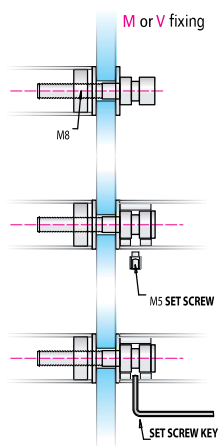
N (Nut) Flange nut

H (Hidden) Flange screw



Fixing guides

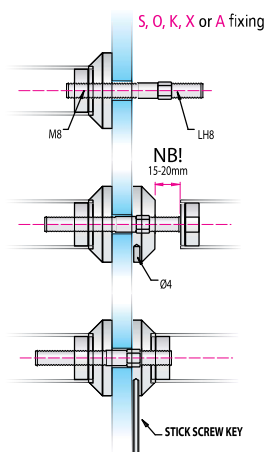
Opening diameter drilled for fixing bolt: Glass door = 12mm. Doors of all other materials = 10mm. If not **M, V, S, O, K, X** or **A** fixing, then opening diameter drilled should be made to suit the fixing bolt.



Double-sided handles (pair)

M, V Fixing guide

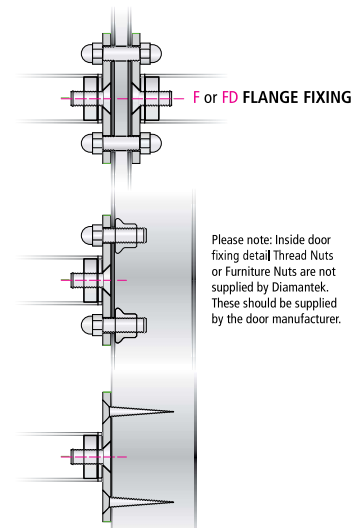
1. Start installation by turning the bolt to fix the external handle to the door.
2. Align the inside handle to allow bolt head to be inserted.
3. Push the inside handle against the door and turn the set screw steadily clockwise using the set screw key.



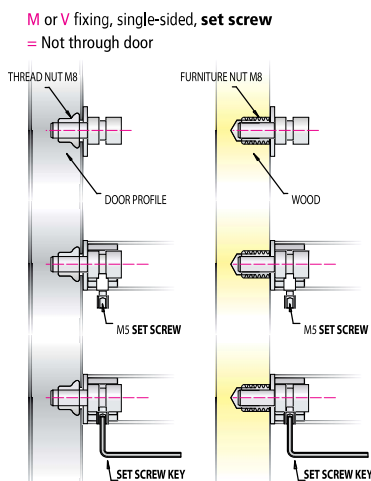
Double-sided handles (pair)

S, O, K, X, A Fixing guide

1. Start installation by turning the bolt to fix the external handle to the door.
2. The screw with the nut (six-facet) must remain inside of the door.
3. Twist the screw so far that it remains 10 mm out from the outer side of the nut.
4. The inside door handle has a left handed thread which attaches to the bolt. Using the stick screw key turn the fixing nut steadily clockwise until it is tight.



Please note: Inside door fixing detail Thread Nuts or Furniture Nuts are not supplied by Diamantek. These should be supplied by the door manufacturer.

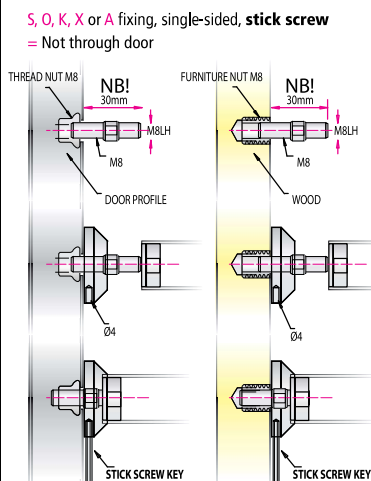


Single-sided handles (pieces)

Set screw, Fixing guide

1. Start installation by turning the bolt tightly into the thread nut or furniture nut in the door.
2. Align the door handle with the bolts.
3. Push the handle against the door and turn the set screw steadily clockwise using the set screw key.

Note: the furniture nut M8 or the thread nut M8 are not supplied with the handles.

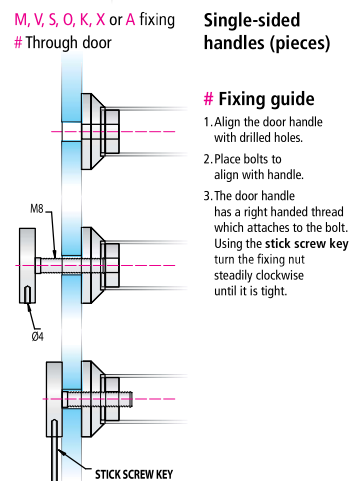


Single-sided handles (pieces)

Stick screw, Fixing guide

1. Align the door handle with the bolts.
2. Push the handle against the door.
3. The door handle has a left handed thread which attaches to the bolt. Using the stick screw key turn the fixing nut steadily clockwise until it is tight.

Note: the furniture nut M8 or the thread nut M8 are not supplied with the handles.



Single-sided handles (pieces)

Fixing guide

1. Align the door handle with drilled holes.
2. Place bolts to align with handle.
3. The door handle has a right handed thread which attaches to the bolt. Using the stick screw key turn the fixing nut steadily clockwise until it is tight.